

# 18" Wide Slider Bed Conveyor

# GRAINWAY



Perfect choice for on top of grain bins with catwalks.

Belt runs a smooth steel surface

Belt is 18" wide

Conveyor is 19" wide and has 8 1/2" side walls

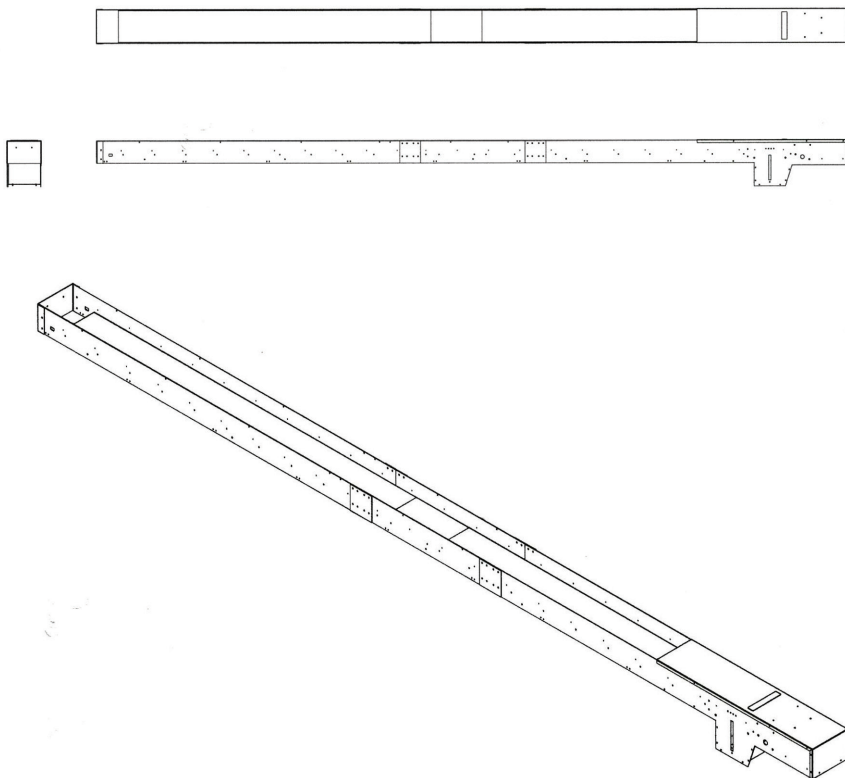
Uses 4 1/2", 6 1/2" and 8 1/2" drive rollers depending on length

Uses 4" diameter tail roller

Maximum capacity 7000 bu/hr

We do custom conveyors in this style to match up length, belt speed and capacity for what the customer might want

With or without top covers



## 18" Slider Bed Conveyor with 4 1/2" Driver Roller

	Conveyor Length		
	10'	20'	30'
Belt Speed 497 ft/min	7000 bu/hr	7000 bu/hr	7000 bu/hr
Belt Speed 433 ft/min	6200 bu/hr	6200 bu/hr	6200 bu/hr
Belt Speed 364 ft/min	5000 bu/hr	5000 bu/hr	5000 bu/hr
Belt Speed 274 ft/min	3800 bu/hr	3800 bu/hr	3800 bu/hr
Belt Speed 206 ft/min	2800 bu/hr	2800 bu/hr	2800 bu/hr

Horse power requirement: 3-5 hp

## 18" Slider Bed Conveyor with 6 1/2" Driver Roller

	Conveyor Length	
	40'	50'
Belt Speed 526 ft/min	7000 bu/hr	7000 bu/hr
Belt Speed 396 ft/min	5200 bu/hr	5200 bu/hr
Belt Speed 297 ft/min	4000 bu/hr	4000 bu/hr
Belt Speed 234 ft/min	3100 bu/hr	3100 bu/hr

Horse power requirement: 5 - 7 1/2 hp

## 18" Slider Bed Conveyor with 8 1/2" Driver Roller

	Conveyor Length						
	60'	70'	80'	90'	100'	110'	120'
<b>Belt Speed 518 ft/min</b>	7000 bu/hr	7000 bu/hr	7000 bu/hr	6000 bu/hr	5500 bu/hr	5000 bu/hr	4000 bu/hr
<b>Belt Speed 389 ft/min</b>	6000 bu/hr	5500 bu/hr	5200 bu/hr	4700 bu/hr	4100 bu/hr	3500 bu/hr	3000 bu/hr
<b>Belt Speed 306 ft/min</b>	4500 bu/hr	4300 bu/hr	4100 bu/hr	3700 bu/hr	3100 bu/hr	2700 bu/hr	2400 bu/hr
<b>Belt Speed 259 ft/min</b>	4000 bu/hr	3800 bu/hr	3500 bu/hr	3100 bu/hr	2600 bu/hr	2200 bu/hr	1900 bu/hr

Horse power requirement: 7 1/2 - 10 hp