

# 24" Wide Slider Bed Conveyor

# GRAINWAY

Use this conveyor if you want high capacity over a short distance.

Conveyor is 25" wide

Conveyor has 8 1/2" or 10 1/2" side walls

24" wide belt

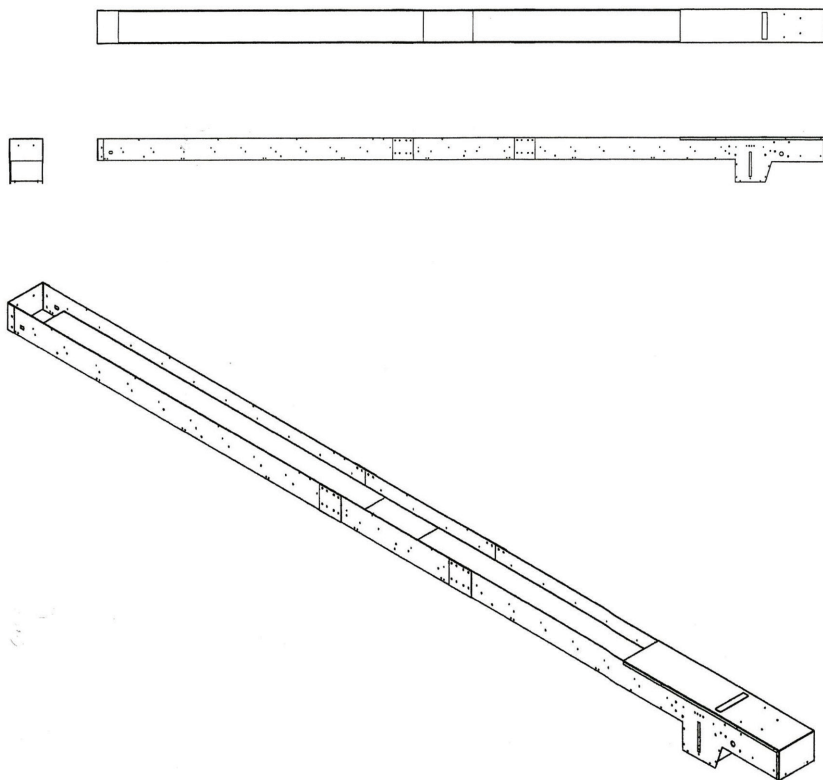
Belt glides over a smooth steel surface

Maximum capacity is 10,000 bu/hr

It has a 8 1/2" drive roller

Conveyor has a 4" diameter tail roller

Conveyor has a side mount drive system



## 24" Slider Bed Conveyor Maximum Capacity

	10'	20'	30'	40'	50'
<b>Belt Speed 518 ft/min</b>	10,000 bu/hr	10,000 bu/hr	10,000 bu/hr	10,000 bu/hr	10,000 bu/hr
<b>Horse Power Needed</b>	5 hp	5 hp	7 1/2 hp	7 1/2 hp	7 1/2 hp
	60'	70'	80'	90'	
<b>Belt Speed 518 ft/min</b>	10,000 bu/hr	9000 bu/hr	8500 bu/hr	8000 bu/hr	
<b>Horse Power Needed</b>	10 hp	10 hp	10 hp	10 hp	
	10'	20'	30'	40'	50'
<b>Belt Speed 389 ft/min</b>	9000 bu/hr	9000 bu/hr	9000 bu/hr	9000 bu/hr	9000 bu/hr
<b>Horse Power Needed</b>	3 hp	5 hp	7 1/2 hp	7 1/2 hp	7 1/2 hp
	60'	70'	80'	90'	
<b>Belt Speed 389 ft/min</b>	9000 bu/hr	8000 bu/hr	7000 bu/hr	7000 bu/hr	
<b>Horse Power Needed</b>	10 hp	10 hp	10 hp	10 hp	