

Roller Bed Conveyor

GRAINWAY



Conveyor is a roller bed.
The belt rides on
3" diameter rollers
spaced at 23" apart.

Side walls are 13.68"

Width is 21.30"

Drive roller is 8 1/2" diameter

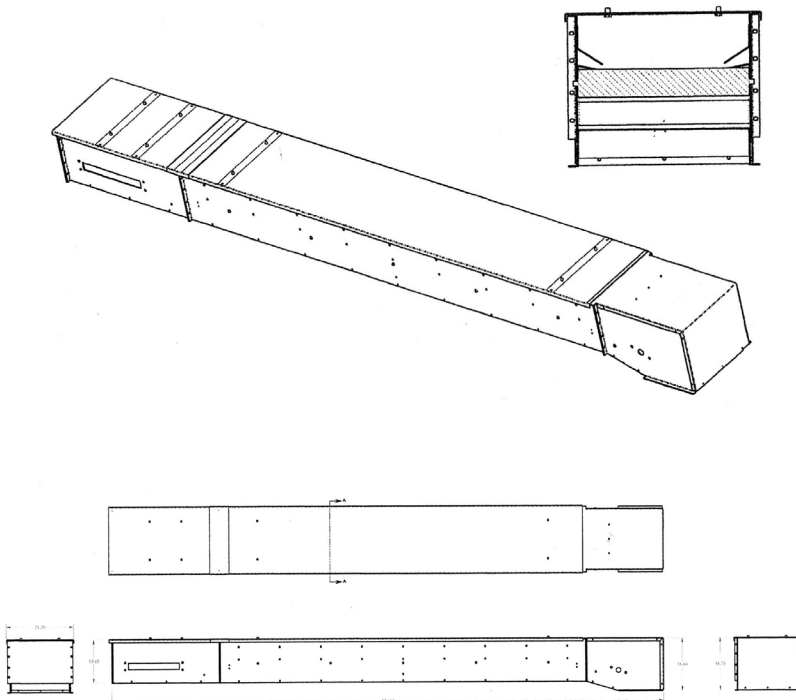
Side mount drive system

4 1/2" diameter tail roller

2 feet of tightener at rear of
conveyor

Conveyor uses 18" wide belt

The two common belt speeds are
389 and 306 feet per minute



Roller Bed Conveyor Lengths

	100'	150'	200'	250'	300'
Belt Speed 389 ft/min	15 lb/ft 350,000 lbs/hr	12 lb/ft 280,080 lbs/hr	8 lb/ft 186,720 lbs/hr	6 lb/ft 140,040 lbs/hr	4.5 lb/ft 105,030 lbs/hr
Belt Speed 306 ft/min	15 lb/ft 275,400 lbs/hr	12 lb/ft 220,320 lbs/hr	8 lb/ft 146,880 lbs/hr	6 lb/ft 110,160 lbs/hr	4.5 lb/ft 82,620 lbs/hr
	350'	400'	450'	500'	
Belt Speed 389 ft/min	3.5 lb/ft 81,690 lbs/hr	2.75 lb/ft 64,185 lbs/hr	2 lb/ft 46,680 lbs/hr	1.5 lb/ft 35,010 lbs/hr	
Belt Speed 306 ft/min	3.5 lb/ft 64,260 lbs/hr	2.75 lb/ft 50,490 lbs/hr	2 lb/ft 36,720 lbs/hr	1.5 lb/ft 27,540 lbs/hr	

The conveyor is at maximum capacity using 10 hp motor.
If you go with less pounds per feet the horse power requirement would be less.