

Standard Size Flat Slider Bed Conveyors

GRAINWAY



These are the conveyors that are used under the aeration floors of grain bins.

They have a top mount drive system with a 4 1/2" drive roller.

Conveyor is 13" wide with a 12" wide belt.

Conveyors have a 8 1/2" sidewall.

Belt glides on a smooth steel surface.

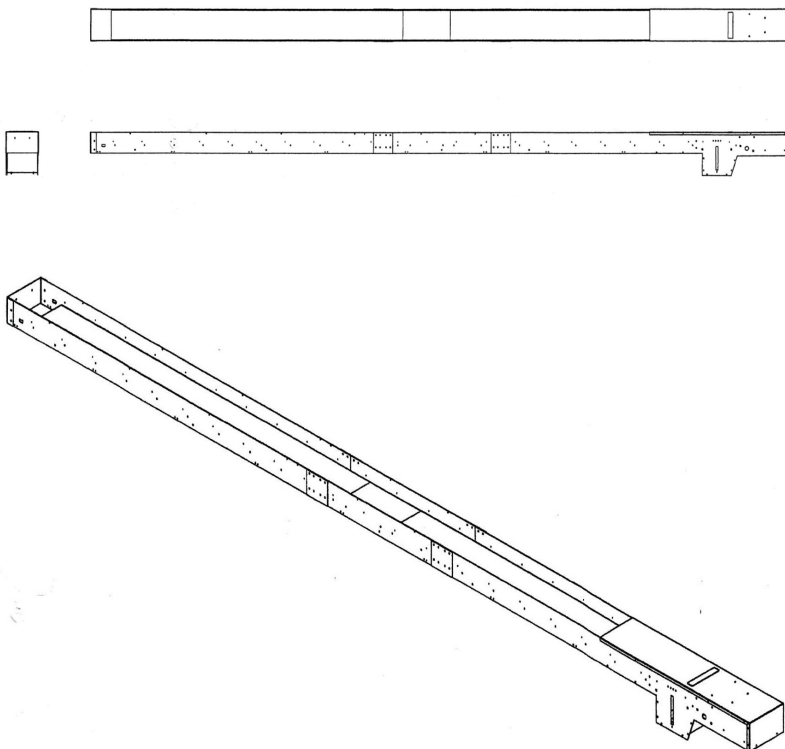
Fits easily under bin aeration floors.

Maximum capacity is 5000bu/hr.

Conveyors can be made portable so they can be used for several bins or they can be installed permanently.

These are the conveyors that are used in a lot of cleaning facilities.

We do custom lengths and custom speeds for what is required for the job.



Standard Size Flat Slider Bed Conveyors for Under Bin Aeration Floors

	1824 - F - XL	2730 - F - XL	3336 - F - XL	4248 - F - XL
Bin Size Range	18' - 24'	27' - 30'	33' - 36'	42' - 48'
Belt Speed	497 ft/min	497 ft/min	497 ft/min	497 ft/min
Capacity	5000 bu/hr	5000 bu/hr	5000 bu/hr	5000 bu/hr
HP Needed	3 HP	3 HP	5 HP	5 HP
Conveyor Length	20' 7"	23' 7"	26' 7"	32' 7"

Standard Size Flat Slider Bed Conveyors Being Used in Seed Facilities

	1824 - F	2730 - F	3336 - F	4248 - F
Conveyor Length	18'	21'	24'	30'
Belt Speed ft/min	_____ bu/hr _____			
497	5000	5000	5000	5000
391	3750	3750	3750	3750
274	2750	2750	2750	2750
206	2000	2000	2000	2000
154	1500	1500	1500	1500
138	1250	1250	1250	1250
114	1000	1000	1000	1000